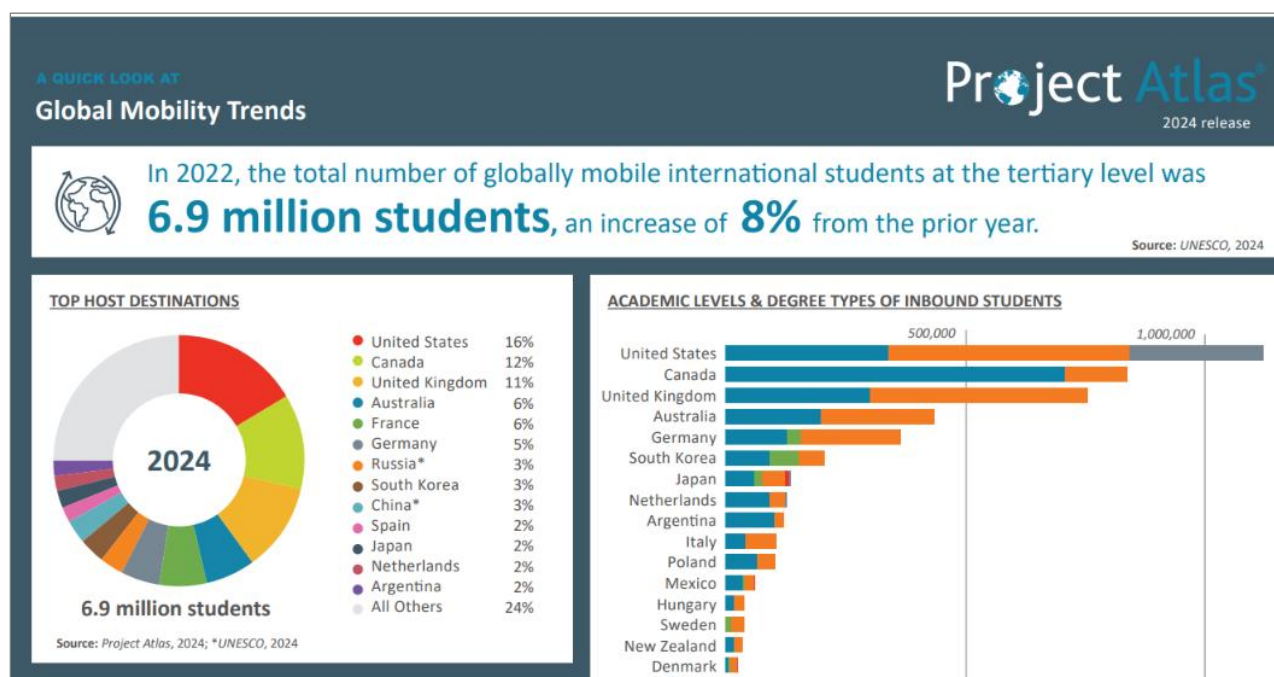


APPENDIX – ALTERNATIVE SOURCES OF INTERNATIONAL DATA

I thought I had wrapped up the article on June fourteenth. Then an article appeared in *Times Higher Ed* that Chinese students would now be welcome in the U.S. (Knox B). U.S. government changes keep happening and comments on internationalisation keep appearing in sources such as *University World News* (de Wit). The focus of the Appendix is additional sources of data.

International Higher Education Data Sources for Countries and Institutions

The United States has been a major contributor of its IPEDS data (Integrated Post-Secondary Education Data System) to international initiatives <https://nces.ed.gov/ipeds>. * The Education Department eliminated the program to train institutions on how to collect and report data in June.(Blake). This does not eliminate IPEDS. It is not clear what will happen to IPEDS in the future. There are a variety of providers of data on international students and their countries. The most comprehensive data are from Project Atlas, a multi-national initiative from the Institute of International Education (IIE), the U.S. Bureau of Education and Cultural Affairs, Department of State, and data from UNESCO. This initiative focuses on movement of students among countries.



https://www.iie.org/wp-content/uploads/2024/11/Project-Atlas_Infographic_2024-1.pdf

Project Atlas identifies countries of origin. For example, China is the top country for incoming students for South Korea, Japan, Australia, and New Zealand. India is number one for the US, UK, Canada, and Germany.

The Chronicle of Higher Education's list looks at the race, ethnicity, and gender of students attending US universities. It allows users rankings on the percent of non- resident foreign students. The school with 100 percent nonresident foreign students is Pacific States University, with only 40

students. The top names are not any of our usual suspects. Users can also rank by ethnicities. It uses IPEDS data. The default list is by number of students. Leading the list are the largest online learning institutions in the US. <https://www.chronicle.com/article/student-diversity/> (registration required).

Open doors collects a variety of time series data on students and scholars coming into the United States and US students studying abroad. It documents the rise in Indian students and the decline in Chinese students over the past 10 years. There is a fact sheet for individual countries such as Taiwan. Data have been from the U.S. Department of State.

- Student data – The number one university in this ranking by number of students is New York University: <https://opendoorsdata.org/data/international-students/>
- International Scholar Trends incoming into the US: <https://opendoorsdata.org/data/international-scholars/international-scholars-trends/>
- Country Fact Sheet Taiwan: https://opendoorsdata.org/wp-content/uploads/2024/12/OpenDoors_FactSheet_Taiwan_2024.pdf (Knox a).

*IPEDS is a system of 12 interrelated survey components conducted annually that gathers data from every college, university, and technical and vocational institution that participates in the federal student financial aid programs. The data collections occur in fall, winter, and spring. <https://nces.ed.gov/ipeds>

RESOURCES

Blake, J. (9 June 2025). Trump ends Vital Higher Ed Data System Training. *Inside Higher Ed* <https://www.insidehighered.com/news/government/politics-elections/2025/06/09/departments-education-discontinues-ipeds-training> ((Registration required))

de Wit H. (11 Jun2025). What do we mean when we use the world ‘internationalisation?’. *University World News*. <https://www.universityworldnews.com/post.php?story=20250611133517471>

Knox, L. (18 Nov 2024). A new era in international enrollment. <https://www.insidehighered.com/news/global/international-students-us/2024/11/18/international-student-trends-shift-south-asia>

Knox, L. (13 Jun 2025). In Reversal, Trump says Chinese Students are Welcome. *Inside Higher Ed*. <https://www.insidehighered.com/news/quick-takes/2025/06/13/reversal-trump-says-chinese-students-are-welcome>

Data Sources:

Data: International Students by the Numbers https://www.iie.org/wp-content/uploads/2024/11/Project-Atlas_Infographic_2024-1.pdf

UNESCO Global Mobility trends Project Atlas https://www.iie.org/wp-content/uploads/2024/11/Project-Atlas_Infographic_2024-1.pdf

The Department of Education’s National Center for Education Statistics collects the data. <https://nces.ed.gov/>