

<https://worldresearchranking.com/>

Affiliation: World Scientific Publishers

Founding Date: 2020

Location: Singapore

Earliest Available Online: Fall 2020

Number of Institutions – 250; the top 250 in QS World University Rankings

METHODOLOGY:

Multi-disciplinary is unique to WURR.

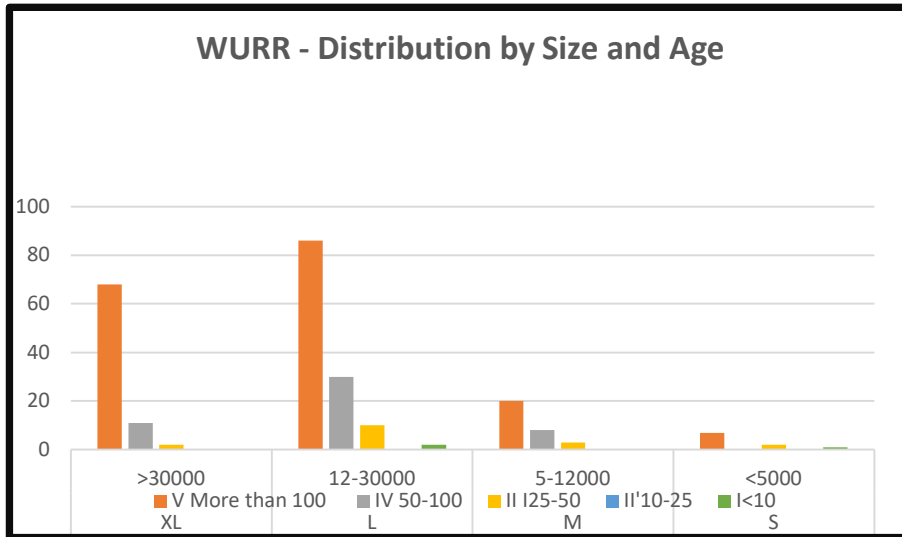
“To define and measure the % of multi-field and multi-category documents, OECD’s schema in Web of Science Incites which classifies field of science and technology in forty-two categories under six major fields were selected. A multi-category document was defined as a document which is classified in two or more OECD categories within the same field; a multi-field document was defined as a document which is classified in two or more OECD fields, based on its research areas in Web of Science.” (Yeo, Yang, and Chan, pg. 3).

Table 1: Aspects and indicators in World University Research Rankings

Aspect	Indicator	Measure
Research multi-disciplinarity	% multi-field documents	Degree of multi-disciplinary research across different fields
	% multi-category documents	Degree of multi-disciplinary research across different categories within same research field
Research impact	Category Normalised Citation Impact	Average standard of University’s research impact
	% documents in Q1 journals	Proportion of University’s publications in most impactful journals
	% documents in top 1%	Proportion of peaks of excellence in University’s research impact
Research collaborative-ness	% industry collaboration	Degree of collaborative-ness across academia-industry boundaries
	% international collaboration	Degree of collaborative-ness across international borders

See Clarivate’s [Indicators Handbook](http://help.prod-incites.com/inCites2Live/8980-TRS/version/default/part/AttachmentData/data/InCites-Indicators-Handbook-6%2019.pdf) for definitions of the other metrics. (<http://help.prod-incites.com/inCites2Live/8980-TRS/version/default/part/AttachmentData/data/InCites-Indicators-Handbook-6%2019.pdf>)

Each university is classified by **size and age**. Over 70% of the institutions are over 100 years old. The three youngest universities are results of reorganizations of existing institutions. Over 90% have more than 12,000 students.



INTERFACE:

The user can sort on overall rank, the three metrics, location, size and age.

For example, I can re-sort to find the highest ranked Asian university for Multidisciplinary. Universiti Teknologi Malaysia or more specifically the most collaborative Japanese university over 100 years old, with 12 to 30,000 students, Tokyo Institute of Technology.

ADVANTAGES: Seven size-independent third party metrics that can be sorted. Impact and Collaborative data are available on Incites for those who have a subscription. WURR provides a new metric that is reflective of current research.

DISADVANTAGES: This first edition has too few universities to come to any significant conclusions, especially around age and size. Methodology information available to the public is limited and is only available in a book for purchase. It uses journal “quality” metrics that are being questioned by top researchers in the field.

RANK	WORLD [250]	ASIA-PACIFIC [70]	WORLD
1	Massachusetts Institute of Technology	Nanyang Technological U	10 SG
2	Technical U of Denmark	King Abdulaziz U	24 SA
3	École Poly Fédérale de Lausanne	Hong Kong U Sci Tech	27 HK
4	Carnegie Mellon U	Pohang U Sci Tech	30 KR
5	Eindhoven U of Technology	National U Singapore	40 SG
6	CentraleSupélec	KAIST	57 KR
7	Telecom Paris Tech	U Technology Sydney	64 AU
8	Wageningen U & Research	City U Hong Kong	73 HK
9	ETH Zurich	Hong Kong Poly U	91 HK
10	Nanyang Technological U	Chinese U HK	107 HK